



WS-P225~245

POLY-CRYSTALLINE MODULES



Features

- 10 years, 12 years, 30 years** lifetime Warranty.
- Positive tolerance **0~+3%** ensures power output.
- Performance double warranted by **Zurich** Insurance.
- CPK>1.33**, ensured module quality.
- Module can bear snow loads up to **5400Pa** and wind loads up to **3800Pa**.



WSOLAR is a high tech company focusing on production of solar cells and modules. We strictly carry on quality control system ISO9001 and every module is with the qualifications of CE, TUV, UL, IEC61215, IEC61730, PV CYCLE and MCS etc... Most of our modules are applied in residential, commercial and industrial projects by on-grid and off-grid systems throughout the world, bringing clean and sustainable energy for everyone.

WS-P225~245

Specifications

Model type	WS-P225	WS-P230	WS-P235	WS-P240	WS-P245
Peak power - Pmax (W)	225	230	235	240	245
Open circuit voltage - Voc (V)	36.6	36.6	37.2	37.2	37.6
Maximum power voltage - Vmp (V)	29.5	29.5	30.0	30.0	30.5
Short circuit current - Isc (A)	8.24	8.42	8.46	8.65	8.75
Maximum power current - Imp (A)	7.63	7.80	7.83	8.00	8.04
Cell efficiency μc (%)	15.87	16.23	16.56	16.92	17.28
Module efficiency μm (%)	13.75	14.05	14.36	14.66	14.97
Maximum system voltage	1000V DC				
Maximum series fuse rating	15A				
Power tolerance	0~+3%				
Temperature coefficients of Pmax	-(0.4+0.05)%/°C				
Temperature coefficients of Voc	-(115+5)mV/°C				
Temperature coefficients of Isc	(0.08±0.015)%/°C				
Nominal operating cell temperature	47±2°C				

Standard testing condition (STC): Irradiance 1000W/m², Temperature: 25°C, AM=1.5

Qualification test parameters

Operating temperature	-40°C to +85°C
Storage temperature	-40°C to +85°C
Pressure bearing	≥5400 Pascal
Wind bearing	≥3800 Pascal

Packing configuration

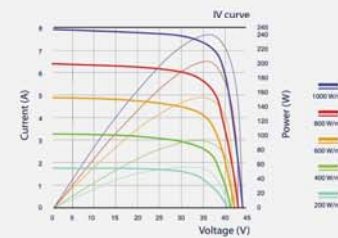
Container	20'GP	40'GP	40'HQ
Pieces per pallet	20	20	22
Pallets per container	12	28	28
Pieces per container	240	560	616

Mechanical characteristics

Cell size	Poly 156*156 (6inch)
No. of cells	60pcs (6*10)
Dimension	1650*992*50mm
Weight	19.5kg
Glass	3.2mm high transmission, low iron, tempered glass
Frame	Anodized aluminum alloy
Junction box	MC4 connector, TUV certified
Internal diodes	6 bypass diodes
Cable	Section: 4.0mm ² Length: 900mm

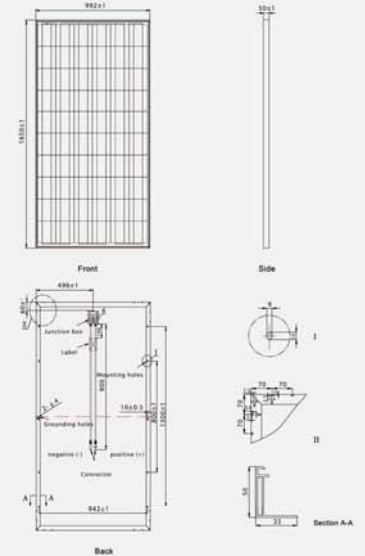
Electrical performance

Cell temperature 25°C



Product dimension

Unit: mm



CAUTION: READ SAFETY AND INSTALLATION INSTRUCTIONS BEFORE USING THE PRODUCT.
© April 2012 WSOLAR Limited. ALL rights reserved. Specifications included in this datasheet are subject to change without notice.